

Disclaimer

The information in this document, photos and packages are subject to change without notice. The manufacturer makes no representations or warranties with respect to the contents hereof and specifically disclaim any implied warranties of merchantability or fitness for any particular purpose. The manufacturer reserves the right to revise this publication and to make changes from time to time in the content hereof without obligation of the manufacturer to notify any person of such revision or changes.

Butterfly Technology (Shenzhen) Limited.

Address: 6F Building 1, No. 35 Cui Jing Road, Pingshan New District, Shenzhen, 518118, P.R.C.
Tel: 86-755-86139000
Fax: 86-755-86139206
Http: www.piqs.com

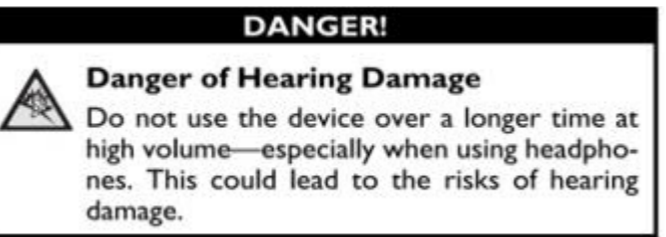
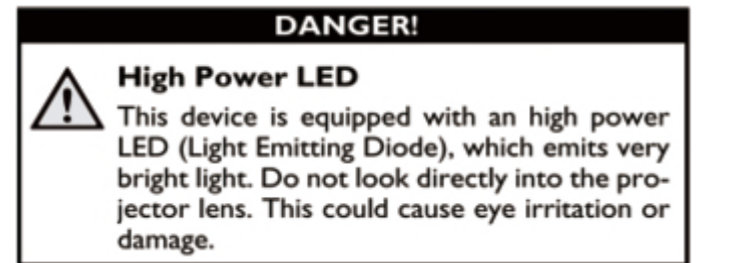
PIQS is a trademark of Butterfly Technology (Shenzhen) Limited.
Other trademarks are the properties of their respective owners.

Proceed as follows to avoid any moisture build-up:

1. Seal this device in a plastic bag before moving it to another room, in order for it to adapt to room conditions.
2. Wait one to two hours before you take the device out of the plastic bag.

- The device should not be used in a very dusty or very bright (sunlight) environment. Dust particles and other foreign objects may damage the unit. Bright light (Sunlight) may interfere the remote controller sensor.
- Do not expose the device to extreme vibrations. It may damage the internal components.
- The packing materials should be kept out of the hands of children.

Safety



Remote controller uses Laser in order to interact with the image screen, therefore do not stare at the front of the remote controller.



Repairs

Do not make any repairs to the device yourself.

Improper maintenance can result in injuries or damage to the device. Only have your device repaired by an authorized service center.

Do not remove the type label from your device; this would void the warranty.

Power Supply

Use only the enclosed power adapter. Check whether the mains voltage of the power supply matches the mains voltage available at the setup location. This equipment complies with the voltage type specified on the unit.

The capacity of the remote controller battery and the projector diminishes with time, check the status light or warning message. Do not overcharge the battery for more than 24 hours.

Do not try to replace the battery yourself. Incorrect handling of the battery or using the wrong type of battery can cause damage to the device or cause injury.

- Switch the device on or off using the power switch before removing the power supply from the socket.
- Turn off the device and remove it from the power supply before cleaning the surface.
- Use a soft and dry cloth. Never use liquid, gaseous or easily flammable cleansers (sprays, abrasives, polishes, alcohol). Do not allow any moisture to reach the interior of the device.

Limited Warranty

We promote its products of highest quality and we make the following limited warranty to original consumers of its projectors sold in our official resellers/dealers.

- This product and its accessories are warranted for One year from the date of purchase.
- This warranty only applies if the product has been used in accordance with the manufacturers' instructions under normal use and with reasonable care.
- This warranty does not cover:
 - *Damage to the Projector that is caused by accident, misuse, abuse, negligence, alteration (including rooting the unit), natural disaster, or unauthorized repair of the projector;
 - *Improper or incorrectly performed installation, setup, operation, repair or maintenance;
- For detailed information of warranty, please contact your dealers or retailers directly.

Regulatory Information

Model: TT
FCC ID:2ALH2-PFAT100
IC:22519-PFAT100

WARNING:

This device complies with part 15 of the FCC Rules. Operation is subject to the following two conditions:

- (1) This device may not cause harmful interference, and
- (2) This device must accept any interference received, including interference that may cause undesired operation, changes or modifications not expressly approved by the party responsible for compliance could void the user's authority to operate the equipment.

NOTE:

This equipment has been tested and found to comply with the limits for a Class B digital device, pursuant to part 15 of the FCC Rules. These limits are designed to provide reasonable protection against harmful interference in a residential installation.

This equipment generates, uses and can radiate radio frequency energy and, if not installed and used in accordance with the instructions, may cause harmful interference to radio communications. However, there is no guarantee that interference will not occur in a particular installation. If this equipment does cause harmful interference to radio or television reception, which can be determined by turning the equipment off and on, the user is encouraged to try to correct the interference by one or more of the following measures:

- Reorient or relocate the receiving antenna.
- Increase the separation between the equipment and receiver.
- Connect the equipment into an outlet on a circuit different from that to which the receiver is connected.
- Consult the dealer or an experienced radio/TV technician for help.

RF Exposure Statement:

For the product, under normal use condition is at least 20cm away from the body of the user, the user must keep at least 20cm distance to the product.

IC Caution Attention IC

This device complies with Industry Canada license-exempt RSS standard(s). Operation is subject to the following two conditions:

- 1) this device may not cause interference,
- 2) and this device must accept any interference, including interference that may cause undesired operation of the device.

Le présent appareil est conforme aux CNR d'Industrie Canada applicables aux appareils radio exempts de licence. L'exploitation est autorisée aux deux conditions suivantes:

- 1) l'appareil ne doit pas produire de brouillage, et
- 2) l'utilisateur de l'appareil doit accepter tout brouillage radioélectrique subi, même si le brouillage est susceptible d'en

This Class B digital apparatus complies with Canadian ICES-003.

Cet appareil numérique de la classe B est conforme à la norme NMB-003 du Canada.

Android is a trademark of Google Inc.
DLP is a trademark of Texas Instruments Inc.
Airplay is a trademark of Apple Inc.
iOS is a trademark of Apple Inc.
iPhone is a trademark of Apple Inc.
All other product names used in this manual are the properties of their respective owners and are acknowledged.



Virtual Touch Projector

Model: TT



EN Quick Start Guide

Overview

Dear Customer

Thank you for purchasing our Virtual Touch Projector. We hope you enjoy your device and its many special features!

About this User Manual

With the following simple guide, you can start using your projector quickly and easily. Please more details, please check the electronic User Manual inside the projector (Go to Home Screen > Settings>User Manual). Read the entire manual carefully. Follow all safety instructions in order to ensure proper operation of your device. The manufacturer accepts no liability if these instructions are not followed.

About the Projector

PIQS projector is built with Android as user interface; customer can navigate all the features like navigating your smart phone by our specially designed “Virtual Touch remote controller”. As well, this is probably the world’s first LED projector with Autofocus features. You can enjoy an outstanding picture quality by DLP technology and our patented innovations.

Features highlights:

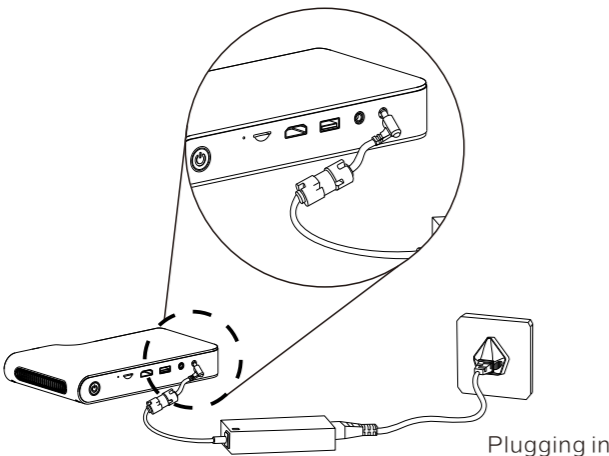
- Intelligent Autofocus
- With Android™ 4.4.2 Built-in
- Wi-Fi and Bluetooth connections
- Virtual Touch Remote Controlling
- Wireless Streaming
- Bright and Vivid Picture Quality
- Bigger Screen in Short Distance
- Simple User-Friendly Interface
- “PIQS Draw” App for business presentation

Starting the Projector

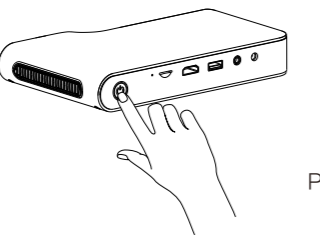
Use the supplied power adapter to plug one end to the mains and the other smaller plug to the projector.

Power on the unit by pressing and holding the power key for a few seconds, the unit will be on in a short while.

The projector can be running on a built-in battery after you have charged the battery. See “Charging the battery”



Plugging in



Power on

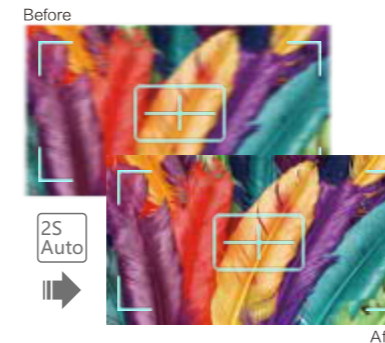
Autofocus

Auto Focus feature will be triggered when it detects motion of the unit. When the unit is on, autofocus need some time to adjust a clear picture and you will see “Auto focusing” on the screen. For instance, if you hold the projector up & down while it is on, the autofocus will automatically start.

You can instantly turn on the auto focus by pressing “Shortcut” on the remote. Either way, you can adjust the focus manually or disable it under the Advanced Setting menu.

*Do not obstruct any object in front of the lens or if the screen surface is too bright or rough surface, it will affect the performance of the autofocus function.

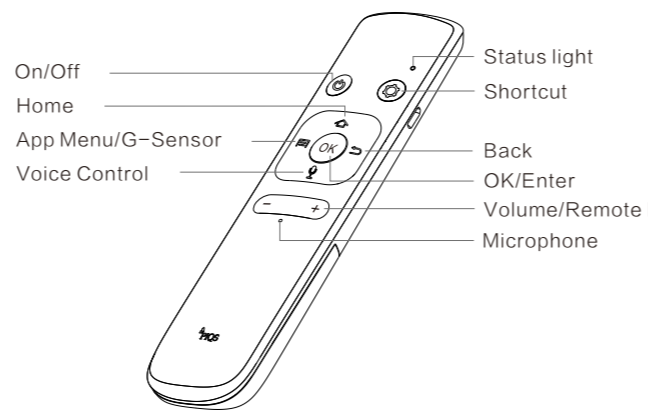
*Virtual Touch Remote function will be stopped temporarily when the unit is Auto Focusing.



Operation

The user interface is very similar as the one in the smart device using Android™ system. The interaction between you and the projector is by the Virtual Touch Remote Controller.

Hold and move your remote when pointing it to the screen, you will see a pointer moving as the remote moves. For instance, press and hold the “OK” key, then move the pointer on screen is just like swiping the screen on your smart phone.



On/Off: When the unit is on, press once to select “Sleep” mode, “Reboot” or “Power Off” . You can also turn on the unit by pressing this key when the unit is connected to the power supply.

Shortcut: Press to select different shortcut features.

App Menu: Submenu for certain App. (Please refer another page for G-Sensor).

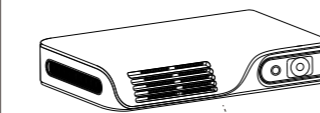
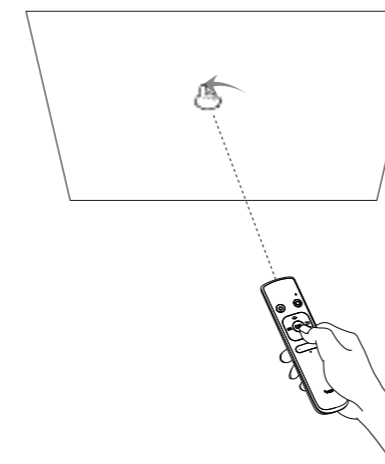
Home: Return to the main screen.

Back: Return to the previous section or exit.

Volume: Control the volume up/down. (Please refer another page for Remote Pairing).

Voice Control: It is not available in your country. (Microphone is used for voice control)

Hold the remote and point to the screen, a cursor will be appeared and it moves as you move your remote. Press “OK” to select certain App and function or drag the screen page on certain background or Apps.

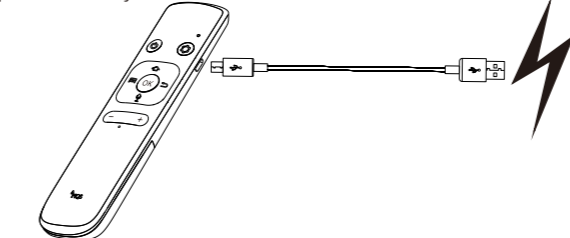


Hold your remote controller close to the projector, press and hold the volume key (+) and (-) at the same time for 3 seconds. Then, pairing starts and status light on remote blinks until pairing is shown on screen.

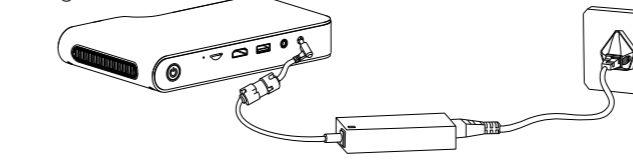
Charging the battery

The remote controller is using lithium-ion battery which can be charged by the supplied cable via USB slot. When charging, the blue status light blinks, and it will be off when fully charged. When the remote is not used for a minute, the blue status light will be off and it is in a standby mode.

The lithium-ion battery is detachable. Please use our supplied battery.



The projector can be used under the battery mode after fully charged. If the battery is running out, it will show a warning message on the screen when the battery life remains about 5 minutes. You can charge the battery anytime by plugging in the socket with our supplied adapter. The status light will turn red when the battery is under charging, the light turns blue when it is fully charged. Use only PIQS-approved chargers and cables. The use of unapproved accessories could damage your device or the built-in battery. Normally the battery running time is about 180 minutes depending on usage.



Unique Applications

- PIQS Draw - A versatile built-in feature to draw/highlight anything on the screen during presentation or picture viewing. (For details, see manual inside “Business”)
- Press the “Shortcut” key on remote, then select “PIQS Draw” .
- A drawing icon appears and you can switch between drawing mode or projection cursor mode.



General Safety Information

Do not make any changes or settings that are not described in this user manual. Physical injury or damage to the device or loss of data can result from improper handling. Take note of all warning and safety notes indicated.

Setting Up the Device

- Do not plug in the device in moist rooms. Never touch the mains cable or the mains connection with wet hands.
- The projection light source is extremely bright by design. To avoid damage to eyes, do not look into the lens when the LED illumination is on.
- The device must have sufficient ventilation and may not be covered. Do not put your device in closed cabinets or boxes while operating.
- Do not cover the ventilation slits. Otherwise the device could overheat or catch fire.
- Protect the device against direct sunlight, heat, large temperature fluctuations and moisture. Do not place the device in the vicinity of heaters or air conditioners.
- Do not allow liquids to enter into the device. Switch off the device and disconnect it from the mains supply if liquids or foreign substances end up inside the device.
- Always handle the unit with care. Avoid touching the lens. Never place heavy or sharp objects on the projector or the power cable.
- If the projector gets too hot or emits smoke, shut it down immediately and unplug the power cable. Have your device examined by trained professionals at a technical service location.

- Under the following conditions, a layer of moisture can appear inside the device which can lead to malfunctions:
 - if the device is moved from a cold to a warm area;
 - after a cold room is heated;
 - when this device is placed in a damp room.